



Civil Capability Statement

Successfully providing civil and infrastructure services



Introduction

In 1998, Andrew Farrer and David Farrer joined forces to form DRASOL.

From there, we have grown to service the civil, solar, rail and waste water treatment industries in Australia. A family business, wholly South Australian owned and operated, made up of real people with the technical skills, expertise and equipment to get the job done.

At DRASOL we see investing in sustainability as the way to best serve our people, customers and communities we work in. This is our way of improving where we live today and for tomorrow.

Our values are based on reliability, respect, honesty, pride and integrity. These are the principles that define what we stand for at DRASOL and are at the core of everything we do.

Our purpose is to be an innovative and solutions-based company dedicated to these core industries in Australia.

As we grow and evolve, we always look out for each other and strive to do the safe and right thing by our people, customers and communities. It is this willingness to rise to the challenge that has taken us from our beginnings to becoming an innovative, solutions-based company, always open to new ideas and new ways of improving.

Successfully delivering civil projects with our trusted clients

Our civil capabilities are best demonstrated by our successful track record in assisting with the delivery of more than 20 key civil projects across Australia since establishing in 1998.

Over these past two decades, DRASOL have developed into a solutions-based business with the capability and expertise to deliver detailed excavation, earthworks, drainage and in-ground services.

As a result of working with a range of Tier 1 Contractors on major projects, DRASOL has developed business systems, honed the skills of our human resources and invested in plant and equipment to better offer the services that are required. Being a subcontractor to a range of corporate joint ventures, consortia and public/private

partnerships has enabled us to evolve our business to exceed the high standards demanded in this realm.

With clients ranging from local and state government departments throughout Australia to local and national organisations, we have been exposed to the full range of legislative and corporate requirements and conduct our operations accordingly. Exposure to both private and public stakeholder input has highlighted the importance of the additional factors that need to be considered

across the broader community when delivering civil projects.

DRASOL supplies civil solutions for utility provider assets, residential/commercial subdivisions and major infrastructure projects. Installation of stormwater drainage and in-ground services is our specialty. With extensive experience working in live traffic corridors, commercial/industrial developments and live rail environments we have evolved to provide safe work practices whilst maintaining high standards of quality and productivity.



The power of self-managed, autonomous work groups

We have the capability to provide self-managed, autonomous work groups working under DRASOL management systems or resources that operate under client direction.

This offers flexible solutions to meet the variances in market demand. We have worked on a broad range of infrastructure projects including the following:

- Elevated highways
- Lowered carriageways
- Trunk water mains with deep excavation
- Pedestrian precinct upgrades
- Commercial properties & car parks
- Residential sub-divisions
- Utility service installation
- Stormwater pollutant traps and detention systems

Key to our success is the ability to deliver the technical components of major civil projects in challenging situations, where a combination of training and prior experience provides the client with the confidence they need to engage us.



Our core capabilities



1

Technical experience

Strong capabilities in all aspects of civil, utility provider services and greenfields projects, in addition to materials handling and logistics management.



2

Quality management system

In-house developed Quality Management System tailored to suit diverse civil projects, incorporating a full suite of supporting documentation to satisfy project inspection and certification requirements.



3

Autonomous workgroups

Site-based quality control teams operate alongside our trades and multi skilled operators, ensuring standards are maintained and remediation works are carried out promptly.

An embedded respect for the health, safety & wellbeing of our human resources, along with those that we have the potential to effect during the course of our works, enables seamless integration into an existing project or the capability to autonomously self-deliver.

**4****Fleet of modern plant & equipment**

Investment in modern plant and equipment to provide advanced tools that increase efficiency and minimise potential delays and re-work. A proactive maintenance programme ensures plant and equipment are in the correct condition as expected by the industry today.

**5****Extensive network of suppliers & service providers**

Our extensive network of suppliers and service providers complements our in-house expertise. This provides the support to deliver a broad range of services across the region with minimal client input.

**6****Industry best practice approach**

Acknowledgement of current industry best practice as the benchmark for our standards of service. In all instances DRASOL aim to exceed the expectations of our clients, leading to long-standing relationships and cementing confidence in our abilities as an organisation.

**7****Diversity in large-scale & small-scale projects**

DRASOL are experienced in large-scale and small-scale civil projects, working both under the umbrella of client systems and as a self-managed contractor responsible for providing turnkey solutions. We have a multi-skilled workforce providing the flexibility to work on diverse projects of all types and size.

Our civil projects

DARLINGTON UPGRADE PROJECT

The Darlington Upgrade Project is an important stage in the delivery of Adelaide's North-South Corridor, comprising approximately 3.3 kilometres of motorway with significant grade separations and road bridges.

Source: Government of South Australia

DRASOL provided multiple work groups over an extended period carrying out a wide range of services including:

- Wastewater infrastructure and valve installation
- Potable water mains
- Electrical/communications infrastructure (common service trenching)
- Large diameter stormwater drainage
- Deep excavations with shoring
- Gross pollutant traps and detention systems
- Detailed excavation and minor pavement works

Significant stormwater infrastructure was installed, with pipework up to 3m diameter at depths up to 7m. Our crews self-managed this installation and coordinated crane support and logistics to enable the smooth delivery of a quality product.

Other DRASOL work groups installed potable water and utility service conduits under live-traffic conditions, working within significant time-critical schedules to avoid disruptions to peak traffic flows.

We also installed a significant stormwater management asset comprising pollutant traps and pre-cast detention chambers founded on a heavy-duty cast in-situ concrete base.

By following a stringent safe working methodology these works were completed ahead of schedule and without incident.



CLIENT	Gateway South (Fulton Hogan & Laing O'Rourke)
LOCATION	Darlington, South Australia
SERVICES	Installation of in-ground services, major stormwater infrastructure, detailed excavation and pavement works.
TIMELINE	2016 - 2019

DARLINGTON PIPELINE PROJECT

DRASOL has extensive experience working in live traffic corridors, commercial and rail environments. We have evolved to provide safe work practices whilst maintaining high standards of quality and productivity for all types of civil projects.

The Darlington Pipeline required the installation of new 1200mm and 900mm diameter potable water mains, enabling the decommissioning of existing services to make way for the new lowered motorway.

Working under York Civil and SA Water, DRASOL crews carried out pipe laying, bedding and backfill operations, whilst providing site support to the third party welding crews.

Scope of works included:

- Bulk excavation and installation of shoring
- Pipe bedding & Level 1 Certified backfill
- Wastewater relocation
- Live service cutovers
- Access chambers, manholes and valve boxes

The urban nature of this site location required the infrastructure to be installed amongst multiple live services, necessitating a highly skilled workforce with the ability to problem solve under time-critical constraints and live traffic environments.



CLIENT	York Civil
LOCATION	Bedford Park & Darlington, South Australia
SERVICES	Potable water trunk mains, valve installation, manholes and chambers, deep excavation
TIMELINE	2016

Our civil projects

HORNSDALE WIND FARM

With a diverse skills set and broad range of experience DRASOL has branched out to offer our civil services to the renewable energy sector.

The Hornsdale Wind Farm is currently South Australia's largest renewable generator, a 309MW facility located approximately 200km north of Adelaide.

Working with our long-term client CATCON we provided mechanical fitters to install and set the wind tower foundation bolt rings. Electrical and communication conduits were also trenching and laid to provide service links through the tower bases.

DRASOL civil crews constructed the following as part of the site access road infrastructure:

- Stormwater culverts and headwalls
- Gabion baskets
- Rock beaching and matting
- Swale drains
- Pavement reinstatement

hornsdalewindfarm.com.au



CLIENT	CATCON
LOCATION	Hornsdale, South Australia
SERVICES	Civil works, tower foundations, stormwater infrastructure
TIMELINE	2015 - 2016

HACKNEY AND NORTH EAST ROAD TRUNK WATER MAIN RENEWAL

The State Government's extension of the O-Bahn Busway via a tunnel on the outskirts of the Adelaide CBD necessitated significant relocation of SA Water assets from several major roadways.

DRASOL assisted long-term client Fulton Hogan with the following work components:

Scope of works included:

- Deep excavation and shoring
- Ground dewatering
- Pipe laying and backfill
- Valve installation and access chambers
- Asset decommissioning
- Pavement reinstatement
- Landscaping
- Out of hours work
- Live traffic scenarios and valve boxes

The works were carried out in the environmentally sensitive Adelaide Parklands and adjacent residential areas, requiring a high degree of consideration for the various stakeholders as well as members of the general public.

The broad skills set and experience of our personnel, coupled with our extensive range of plant and support equipment, enabled the completion of these works with minimal impact on the public and surrounding environs.

CLIENT	Fulton Hogan
LOCATION	Adelaide Metro, South Australia
SERVICES	Deep excavation, dewatering, pipe laying
TIMELINE	2015 - 2016

Our civil projects

SERVICE LOCATING AND POTHOLING, TORRENS ROAD TO TORRENS RIVER (T2T) PROJECT

A significant component of the North-South Corridor programme is the Torrens Road to River Torrens Project, which delivered a 4km non-stop roadway with sections of lowered motorway up to 8 metres below the existing road surface.

As part of the T2T preliminary design phase DRASOL were engaged directly by DPTI to carry out extensive service locating and potholing on a 4.8km stretch of the major road corridor. The entire package was conducted out-of-hours with stringent guidelines and time constraints on access to the work zones.

DRASOL self-performed these works, which involved the provision of the following services:

- Community liaison and stakeholder engagement
- Management of night works access and environmental plans

- Coordination of utility providers attendance, inspection and network access permits
- Traffic management plans, approvals and implementation
- GPS survey, data capture and reporting
- Service locating
- Hydro-vac excavation and pavement reinstatement
- Rock beaching and matting
- Swale drains
- Pavement reinstatement

Our team was responsible for the real-time capture of GPS survey data and photographic records, which were regularly submitted to the client design team as a project deliverable.

The accuracy and clarity of the reporting was critical to facilitate the design process and in this respect DPTI's expectations were far exceeded.

CLIENT	Department of Planning, Transport and Infrastructure (DPTI)
LOCATION	Adelaide Metro, South Australia
SERVICES	Service locating, potholing, GPS survey and data capture, traffic management
TIMELINE	2014 - 2015

SA WATER'S NORTH SOUTH INTERCONNECTION SYSTEM PROJECT (NSISP)

The NSISP is a crucial component of SA Water's Network Water Security Programme, a long-term strategy to deliver a flexible, integrated solution for water transfer and distribution until 2050.

DRASOL were engaged to assist York Civil install a 750mm diameter MSCL pipe through the North Eastern Metro suburbs over a 6 month period in challenging, live traffic conditions.

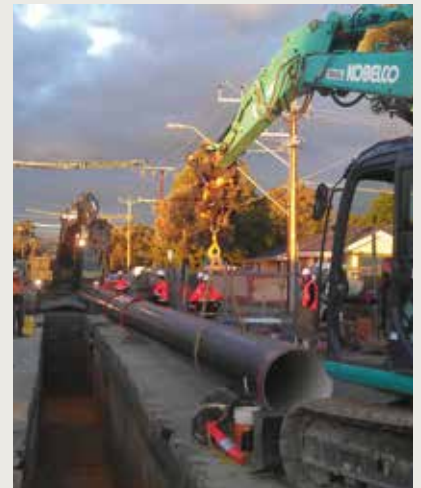
Works carried out included:

- Service locating and hydro-vac potholing
- Deep excavation up to 6m with dewatering
- Shoring and temporary protection of existing services
- Pipe preparation for welding
- Installation of isolation and scour valves with associated chambers

- Pipe wrapping and protective coating systems
- Pavement reinstatement
- Pedestrian management

The asset was installed through a range of sensitive locales including creek crossings, residential areas, public open space and major road intersections.

DRASOL's can-do attitude coupled with a sound approach to safety and quality enabled the project to achieve increased productivity and time savings on projected programme durations.



CLIENT	York Civil
LOCATION	South Australia
SERVICES	Excavation, pipe laying, temporary road construction, shoring
TIMELINE	2012

Our civil projects

EATON RESIDENCE

The owners of this significant property overlooking Adelaide engaged DRASOL to install access tracks to facilitate construction of an extensive private residence after being advised that the works were not feasible.

DRASOL carried out rock stabilisation and employed geotechnical landscaping techniques to work with the client and the environment to provide solutions outside the realms of a standard approach to construction.

Works delivered included:

- Gabion baskets and rock retaining structures
- Driveways and pavement construction
- Stormwater harvesting and management
- Fire track access routes
- Utility services installation

The successful delivery of this interesting project was the result of taking a holistic approach to meeting the client's wishes and working with rather than against the underlying topography, whilst also accommodating applicable codes of practice and regulatory requirements.



CLIENT	Private
LOCATION	Adelaide Hills, South Australia
SERVICES	Earthworks, utility services, rock stabilisation
TIMELINE	2012 - 2014



DRASOL HEAD OFFICE

8 Byre Avenue
Somerton Park
South Australia 5044

PO BOX 105
Hove
South Australia 5048

Telephone 08 8376 9226
Facsimile 08 8376 7683
Email admin@drasol.com.au

www.drasol.com.au